

Scaled data based on original data using

LM-41-14 Approved Method for Photometric Testing Of Indoor Fluorescent Luminaires

Test Report Prepared for

Cooper Lighting Solutions

(formerly Eaton)

Brand: CORELITE

Report Number: ITL68836

Luminaire Tested: **I2-WL-2N5-1C-UNV-AC48-T1-4-SNL5**

Issue Date: 3/3/2020

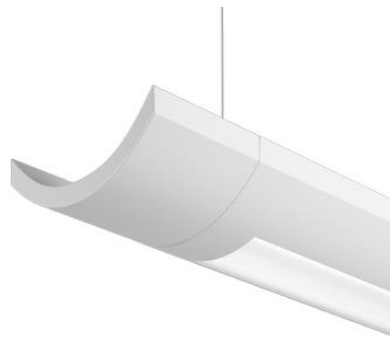
Test Information

Test Method: LM-41-14
Report Number: ITL68836
Test Lab: INDEPENDENT TESTING LABORATORIES, INC.
Issue Date: 3/3/2020
Manufacturer: COOPER LIGHTING SOLUTIONS (FORMERLY EATON)
Product Line: CORELITE
Catalog Number: I2-WL-2N5-1C-UNV-AC48-T1-4-SNL5
Description: FABRICATED WHITE PAINTED METAL HOUSING, FABRICATED WHITE PAINTED METAL BALLAST COVERS/REFLECTORS, EXTRUDED FROSTED LINEAR PRISMATIC PLASTIC LENS BELOW LAMP, LENS PRISMS UP AND PARALLEL WITH LAMPS, LENS FROSTED BOTH SIDES. ONE U-SHAPED 2-PIECE FORMED WHITE PAINTED METAL REFLECTOR ABOVE LAMPS WITH 36 ADJUSTABLE SLOTS ON TOP AND SIDES, ADJUSTABLE REFLECTOR SET TO "DL5" FOR THIS TEST.
Light Source: TWO 28-WATT T-5 SYLVANIA FP28/841/ECO LINEAR FLUORESCENTS.
Ballast/Driver: UNIVERSAL B228PUNV-C

Summary

Lumens per Lamp: 2600 (2 lamps)
Luminaire Lumens: 4105.2 lumens
Efficiency: 78.9%
Efficacy: 64.5 lumens/watt
Spacing Criteria (0/90/45): 1.19 / 1.21 / 1.31
Luminous Opening: Rectangular w/ Sides (W: 0.33' x L: 3.65' x H: 0.02')
CIE Type: Semi-Direct

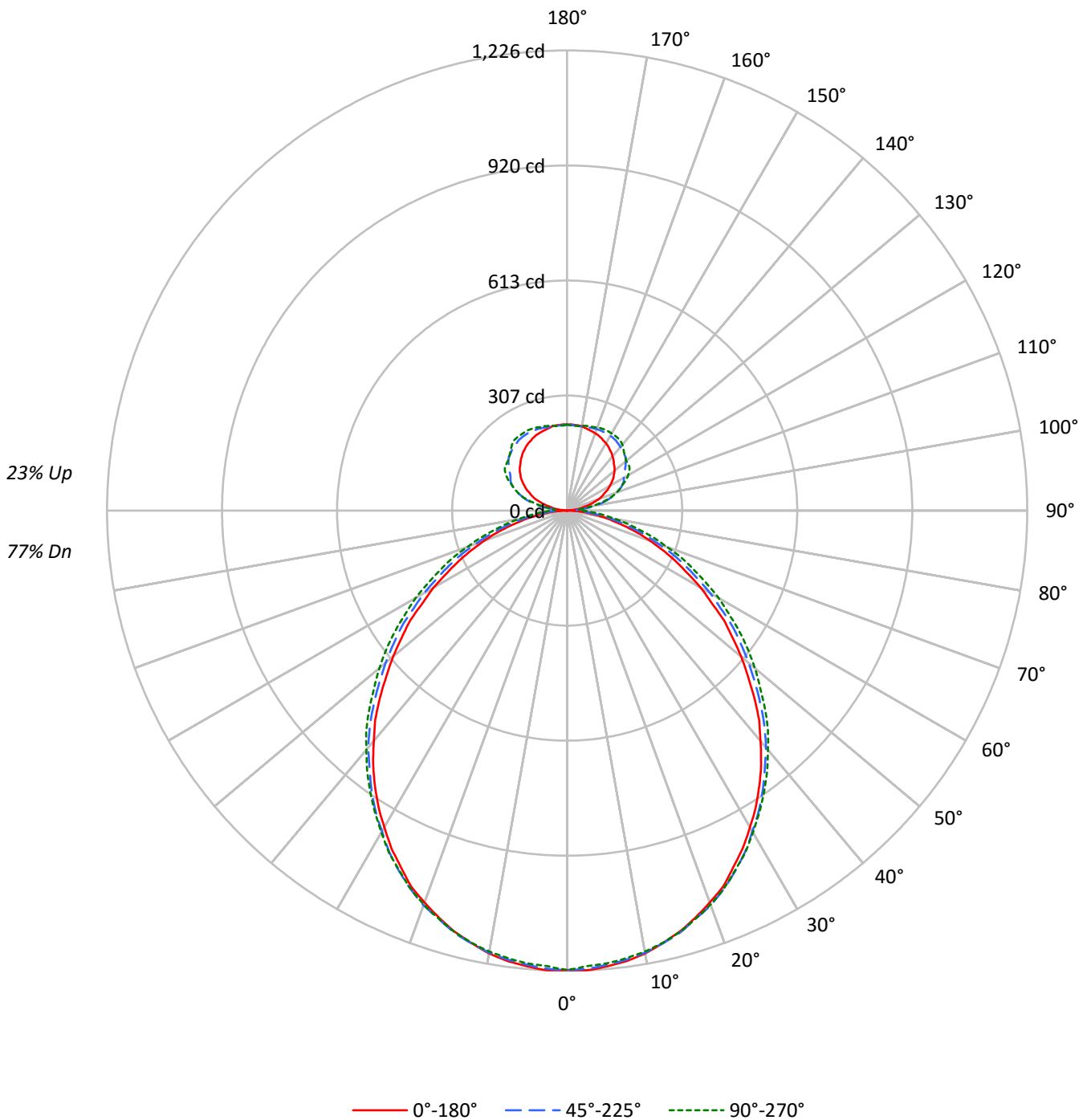
Input Watts (W): 63.6
Input Voltage (V): NR
Input Current (A_{in}): NR
Voltage Rise (V): NR
Power Factor: NR
Total Harmonic Distortion (THDi): NR
Frequency (hertz): 60
Stabilization Time: NR
Operation Time: NR
Ambient Temperature (°C): NR
Test Distance: 25 FT



TEST NUMBER: ITL68836

CATALOG NUMBER: I2-WL-2N5-1C-UNV-AC48-T1-4-SNL5

Luminous Intensity Polar Plot





TEST NUMBER: ITL68836

CATALOG NUMBER: I2-WL-2N5-1C-UNV-AC48-T1-4-SNL5

COEFFICIENT OF UTILIZATION - ZONAL CAVITY METHOD:

RF	20				20				20				20				20	
RC	80				70				50				30				10	0
RW	70	50	30	10	70	50	30	10	50	30	10	50	30	10	50	30	10	0
RCR																		
0	90	90	90	90	85	85	85	85	77	77	77	70	70	70	64	64	64	61
1	82	78	75	72	78	75	72	69	68	66	64	62	60	59	56	55	54	51
2	75	69	63	59	71	65	61	57	60	56	53	54	52	49	50	47	45	43
3	68	60	54	49	65	58	52	48	53	48	45	48	45	42	44	41	39	36
4	62	54	47	42	59	51	45	41	47	42	38	43	39	36	39	36	33	31
5	57	48	41	36	55	46	40	35	42	37	33	39	34	31	36	32	29	27
6	53	43	36	32	50	41	35	31	38	33	29	35	31	27	32	29	26	24
7	49	39	32	28	47	38	31	27	35	30	26	32	28	24	30	26	23	21
8	46	36	29	25	44	34	28	24	32	27	23	29	25	22	27	23	21	19
9	43	33	26	22	41	31	26	22	29	24	21	27	23	20	25	21	19	17
10	40	30	24	20	38	29	23	20	27	22	19	25	21	18	23	20	17	16

AVERAGE LUMINANCE (cd/sqm):

	0°	45°	90°
0°	10998	10998	10998
5°	10990	10923	10877
10°	10922	10842	10794
15°	10787	10722	10673
20°	10606	10558	10498
25°	10369	10332	10261
30°	10080	10028	9996
35°	9766	9721	9712
40°	9361	9376	9384
45°	8920	8923	9036
50°	8414	8451	8637
55°	7940	8008	8199
60°	7331	7434	7736
65°	6720	6839	7176
70°	6102	6157	6551
75°	5365	5527	5925
80°	4698	4754	5418
85°	3931	4140	5207



TEST NUMBER: ITL68836

CATALOG NUMBER: I2-WL-2N5-1C-UNV-AC48-T1-4-SNL5

ZONAL LUMENS:

Zone	Lumens	% Fixture	% Lamp
0°-10°	115.4	2.8	2.2
10°-20°	327.7	8.0	6.3
20°-30°	487.1	11.9	9.4
30°-40°	567.8	13.8	10.9
40°-50°	561.6	13.7	10.8
50°-60°	479.4	11.7	9.2
60°-70°	345.6	8.4	6.6
70°-80°	194.7	4.7	3.7
80°-90°	67.7	1.7	1.3
90°-100°	42.6	1.0	0.8
100°-110°	108.0	2.6	2.1
110°-120°	150.8	3.7	2.9
120°-130°	164.9	4.0	3.2
130°-140°	159.8	3.9	3.1
140°-150°	139.7	3.4	2.7
150°-160°	105.9	2.6	2.0
160°-170°	64.8	1.6	1.2
170°-180°	21.8	0.5	0.4
0°-30°	930.2	22.7	17.9
0°-40°	1498.0	36.5	28.8
0°-60°	2539.0	61.8	48.8
0°-90°	3147.0	76.7	60.5
90°-120°	301.4	7.3	5.8
90°-150°	765.8	18.7	14.7
90°-180°	958.0	23.3	18.4
0°-180°	4105.2	100.0	78.9

CANDELA DISTRIBUTION:

	0°	22.5°	45°	67.5°	90°	Flux
0°	1224	1224	1224	1224	1224	
5°	1219	1220	1215	1212	1211	116
15°	1161	1163	1164	1162	1162	327
25°	1048	1060	1060	1063	1058	483
35°	893	903	909	917	915	558
45°	705	714	728	743	745	543
55°	510	517	538	559	559	453
65°	319	329	347	369	372	316
75°	157	169	181	201	201	169
85°	40	43	57	73	78	43
90°	0	12	27	40	43	3
95°	12	36	32	46	31	15
105°	63	93	113	124	108	66
115°	110	139	163	174	163	110
125°	150	172	188	202	203	133
135°	176	195	214	222	215	137
145°	198	210	227	237	236	124
155°	214	221	231	239	238	99
165°	223	224	229	233	233	63
175°	229	229	228	227	227	22
180°	229	229	229	229	229	



TEST NUMBER: ITL68836

CATALOG NUMBER: I2-WL-2N5-1C-UNV-AC48-T1-4-SNL5

CANDELA DISTRIBUTION (FULL):

	0°	22.5°	45°	67.5°	90°
0°	1224	1224	1224	1224	1224
2.5°	1226	1226	1222	1217	1215
5°	1219	1220	1215	1212	1211
7.5°	1211	1210	1207	1203	1203
10°	1198	1199	1196	1193	1193
12.5°	1180	1182	1181	1178	1179
15°	1161	1163	1164	1162	1162
17.5°	1137	1142	1140	1142	1140
20°	1111	1116	1119	1118	1117
22.5°	1085	1089	1091	1091	1091
25°	1048	1060	1060	1063	1058
27.5°	1014	1022	1026	1028	1028
30°	974	986	987	993	990
32.5°	936	944	950	956	953
35°	893	903	909	917	915
37.5°	849	863	865	878	875
40°	801	813	824	832	832
42.5°	757	767	778	789	792
45°	705	714	728	743	745
47.5°	653	668	679	696	697
50°	605	618	631	652	653
52.5°	555	567	583	601	607
55°	510	517	538	559	559
57.5°	455	474	485	511	510
60°	411	422	440	462	466
62.5°	361	376	390	418	417
65°	319	329	347	369	372
67.5°	276	287	304	326	331
70°	235	246	258	284	282
72.5°	197	206	220	240	244
75°	157	169	181	201	201
77.5°	123	133	145	162	167
80°	93	102	111	131	133
82.5°	63	73	80	101	102
85°	40	43	57	73	78
87.5°	16	23	37	52	56
90°	0	12	27	40	43
92.5°	4	17	25	35	33
95°	12	36	32	46	31
97.5°	24	50	55	65	44
100°	37	65	79	86	67
102.5°	47	80	96	108	87
105°	63	93	113	124	108
107.5°	75	103	127	138	126
110°	90	116	141	150	140



TEST NUMBER: ITL68836

CATALOG NUMBER: I2-WL-2N5-1C-UNV-AC48-T1-4-SNL5

CANDELA DISTRIBUTION (continued):

	0°	22.5°	45°	67.5°	90°
112.5°	101	127	153	161	152
115°	110	139	163	174	163
117.5°	122	148	170	184	177
120°	131	157	174	194	188
122.5°	141	165	180	200	197
125°	150	172	188	202	203
127.5°	157	178	196	204	204
130°	165	184	204	209	206
132.5°	171	190	211	215	210
135°	176	195	214	222	215
137.5°	183	199	218	229	222
140°	188	203	221	234	229
142.5°	194	207	224	236	234
145°	198	210	227	237	236
147.5°	203	214	229	239	237
150°	207	217	230	239	237
152.5°	210	219	231	239	238
155°	214	221	231	239	238
157.5°	217	222	231	238	237
160°	219	223	231	236	236
162.5°	221	223	230	234	233
165°	223	224	229	233	233
167.5°	225	226	228	231	231
170°	228	228	227	229	230
172.5°	229	229	227	227	227
175°	229	229	228	227	227
177.5°	230	230	228	228	227
180°	229	229	229	229	229

(END OF REPORT)